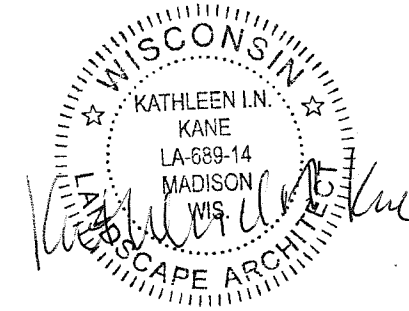


2019 NORTHLAND MANOR TENNIS COURTS
 CONTRACT 8423
 MUNIS NO. 19034-51-130

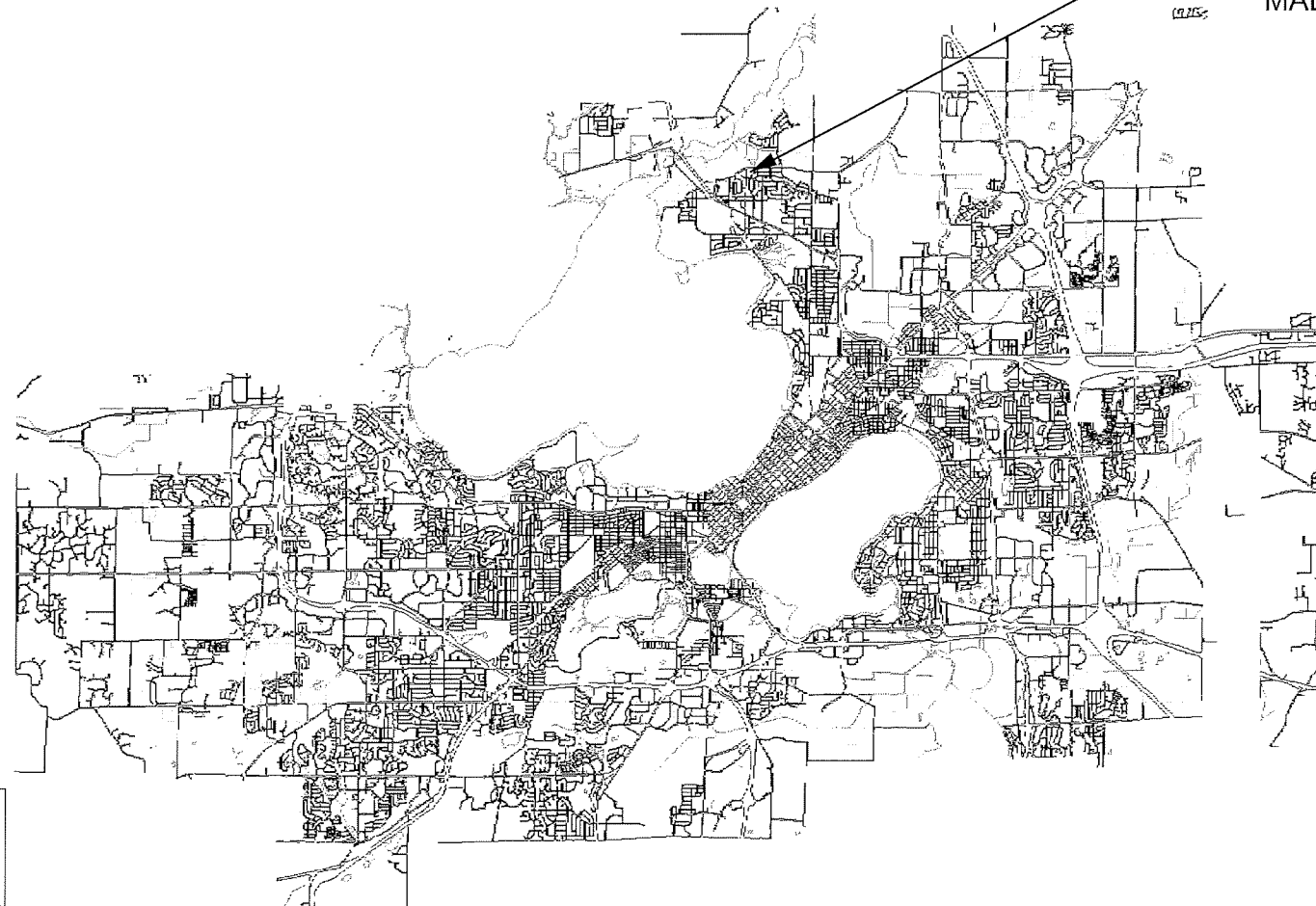


City of Madison
 Department of Public Works
PARKS DIVISION
 City-County Building, Suite 104
 210 Martin Luther King, Jr. Blvd.
 Madison, WI 53703

play
**MADISON
 PARKS**



NORTHLAND MANOR PARK
 902 NORTHLAND DR
 MADISON, WI 53704



PROJECT: *2019
 NORTHLAND
 MANOR TENNIS
 COURTS*

Although every effort has been made in preparing these plans and checking them for accuracy, the contractor and subcontractors must check all details and dimensions of their trade and be responsible for the same.

ITEM	DATE
Advertised by: KK	07/11/2019

PUBLIC WORKS PROJECT #:
8423

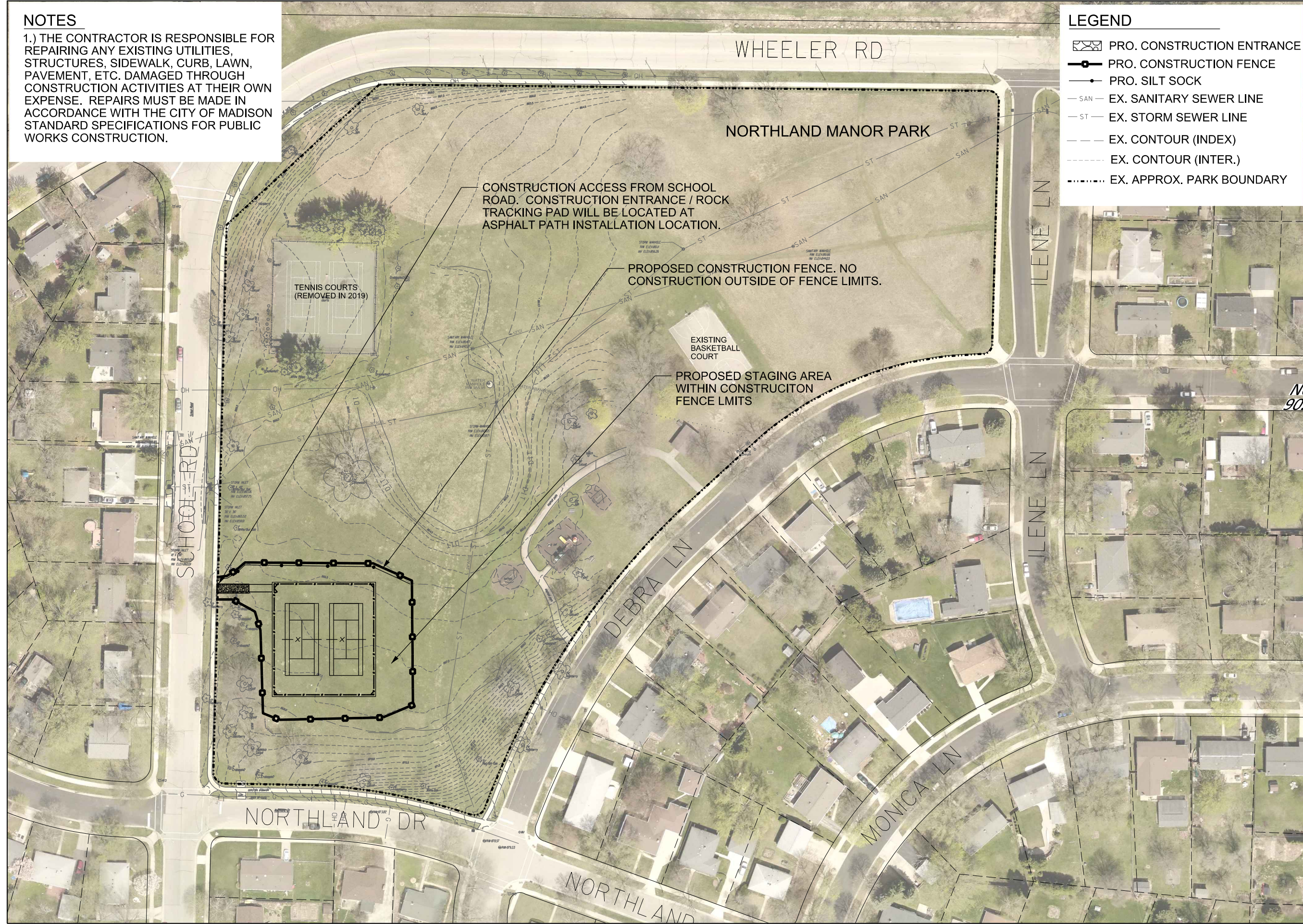
SHEET TITLE:

SHEET NUMBER:

- SHEET SCHEDULE**
- 1.1 PROJECT LOCATION AND SITE ACCESS
 - 1.2 DEMOLITION AND SITE PROTECTION PLAN
 - 1.3 SITE PLAN
 - 1.4 GRADING AND EROSION CONTROL PLAN
 - 1.5 DESIGN CALCULATIONS
 - 1.6 ASPHALT PAVEMENT DETAILS
 - 1.7 FENCING AND GATE DETAILS
 - 1.8 COURT STRIPING DETAILS
 - 1.9 NET POST AND NET TIE-DOWN DETAILS

NOTES

1.) THE CONTRACTOR IS RESPONSIBLE FOR REPAIRING ANY EXISTING UTILITIES, STRUCTURES, SIDEWALK, CURB, LAWN, PAVEMENT, ETC. DAMAGED THROUGH CONSTRUCTION ACTIVITIES AT THEIR OWN EXPENSE. REPAIRS MUST BE MADE IN ACCORDANCE WITH THE CITY OF MADISON STANDARD SPECIFICATIONS FOR PUBLIC WORKS CONSTRUCTION.



CONSTRUCTION ACCESS FROM SCHOOL ROAD. CONSTRUCTION ENTRANCE / ROCK TRACKING PAD WILL BE LOCATED AT ASPHALT PATH INSTALLATION LOCATION.

PROPOSED CONSTRUCTION FENCE. NO CONSTRUCTION OUTSIDE OF FENCE LIMITS.

PROPOSED STAGING AREA WITHIN CONSTRUCTION FENCE LIMITS

TENNIS COURTS (REMOVED IN 2019)

EXISTING BASKETBALL COURT

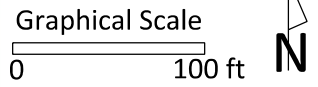
LEGEND

- PRO. CONSTRUCTION ENTRANCE
- PRO. CONSTRUCTION FENCE
- PRO. SILT SOCK
- EX. SANITARY SEWER LINE
- EX. STORM SEWER LINE
- EX. CONTOUR (INDEX)
- EX. CONTOUR (INTER.)
- EX. APPROX. PARK BOUNDARY

City of Madison
Department of Public Works
PARKS DIVISION

City-County Building, Suite 104
210 Martin Luther King, Jr. Blvd.
Madison, WI 53703

play
MADISON
PARKS



PROJECT:
2019
NORTHLAND
MANOR TENNIS
COURTS

NORTHLAND MANOR PARK,
902 NORTHLAND MANOR DR
MADISON, WI 53704

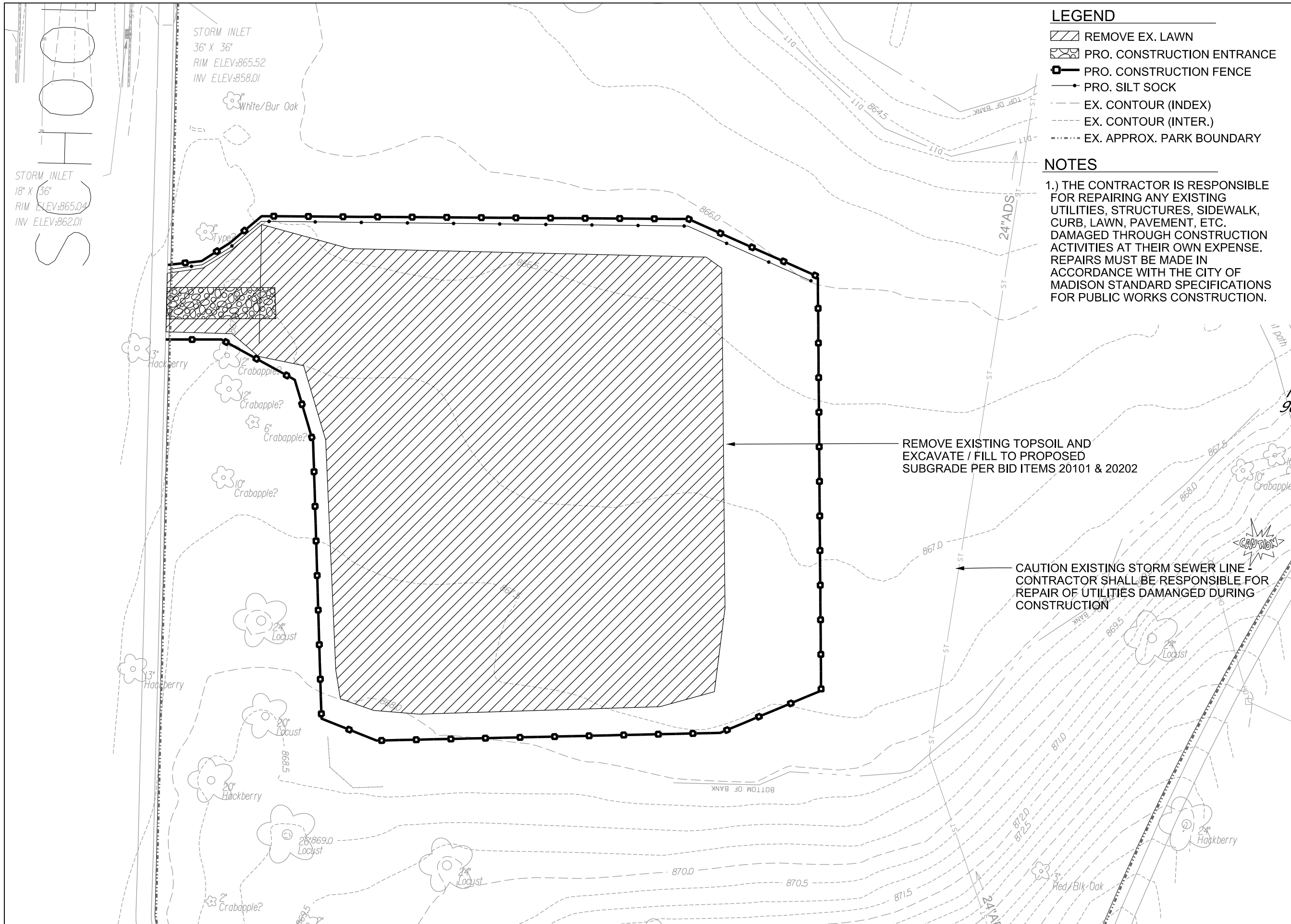
Although every effort has been made in preparing these plans and checking them for accuracy, the contractor and subcontractors must check all details and dimensions of their trade and be responsible for the same.

ITEM	DATE
Advised by: KK	07/11/2019

PUBLIC WORKS PROJECT #:
8423

SHEET TITLE:
PROJECT LOCATION
AND SITE ACCESS

SHEET NUMBER:
1.1



LEGEND

- REMOVE EX. LAWN
- PRO. CONSTRUCTION ENTRANCE
- PRO. CONSTRUCTION FENCE
- PRO. SILT SOCK
- EX. CONTOUR (INDEX)
- EX. CONTOUR (INTER.)
- EX. APPROX. PARK BOUNDARY

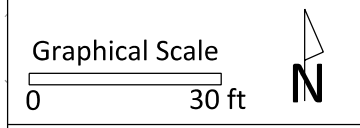
NOTES

1.) THE CONTRACTOR IS RESPONSIBLE FOR REPAIRING ANY EXISTING UTILITIES, STRUCTURES, SIDEWALK, CURB, LAWN, PAVEMENT, ETC. DAMAGED THROUGH CONSTRUCTION ACTIVITIES AT THEIR OWN EXPENSE. REPAIRS MUST BE MADE IN ACCORDANCE WITH THE CITY OF MADISON STANDARD SPECIFICATIONS FOR PUBLIC WORKS CONSTRUCTION.

City of Madison
 Department of Public Works
PARKS DIVISION

City-County Building, Suite 104
 210 Martin Luther King, Jr. Blvd.
 Madison, WI 53703

play
MADISON
PARKS



PROJECT:
2019
NORTHLAND
MANOR TENNIS
COURTS

NORTHLAND MANOR PARK,
902 NORTHLAND MANOR DR
MADISON, WI 53704

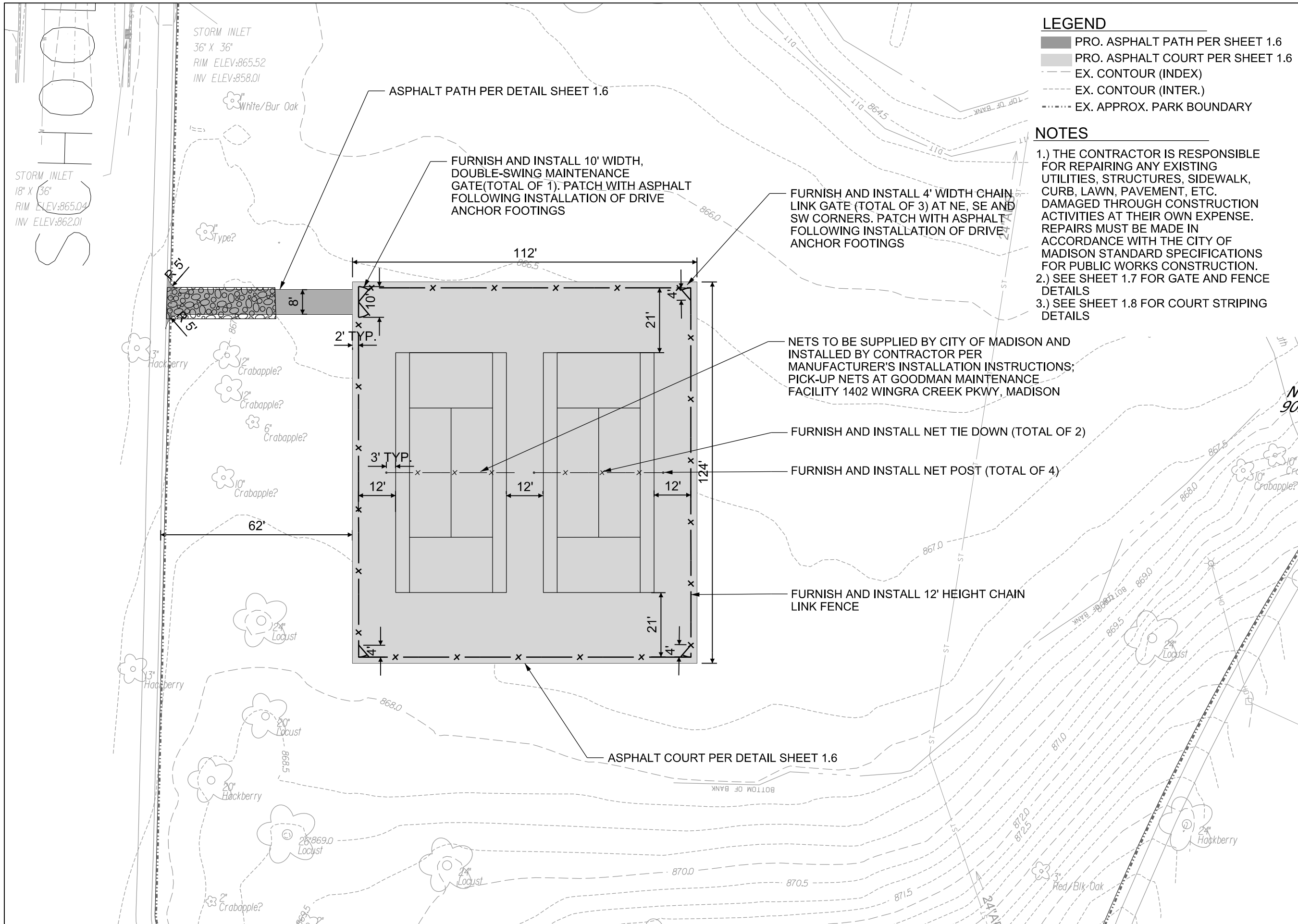
Although every effort has been made in preparing these plans and checking them for accuracy, the contractor and subcontractors must check all details and dimensions of their trade and be responsible for the same.

ITEM	DATE
Advised by: KK	07/11/2019

PUBLIC WORKS PROJECT #:
8423

SHEET TITLE:
DEMOLITION AND SITE
PROTECTION PLAN

SHEET NUMBER:
1.2



LEGEND

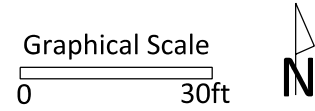
- PRO. ASPHALT PATH PER SHEET 1.6
- PRO. ASPHALT COURT PER SHEET 1.6
- EX. CONTOUR (INDEX)
- EX. CONTOUR (INTER.)
- EX. APPROX. PARK BOUNDARY

NOTES

- 1.) THE CONTRACTOR IS RESPONSIBLE FOR REPAIRING ANY EXISTING UTILITIES, STRUCTURES, SIDEWALK, CURB, LAWN, PAVEMENT, ETC. DAMAGED THROUGH CONSTRUCTION ACTIVITIES AT THEIR OWN EXPENSE. REPAIRS MUST BE MADE IN ACCORDANCE WITH THE CITY OF MADISON STANDARD SPECIFICATIONS FOR PUBLIC WORKS CONSTRUCTION.
- 2.) SEE SHEET 1.7 FOR GATE AND FENCE DETAILS
- 3.) SEE SHEET 1.8 FOR COURT STRIPING DETAILS

City of Madison
 Department of Public Works
PARKS DIVISION
 City-County Building, Suite 104
 210 Martin Luther King, Jr. Blvd.
 Madison, WI 53703

play
MADISON PARKS



PROJECT:
**2019
 NORTHLAND
 MANOR TENNIS
 COURTS**

**NORTHLAND MANOR PARK,
 902 NORTHLAND MANOR DR
 MADISON, WI 53704**

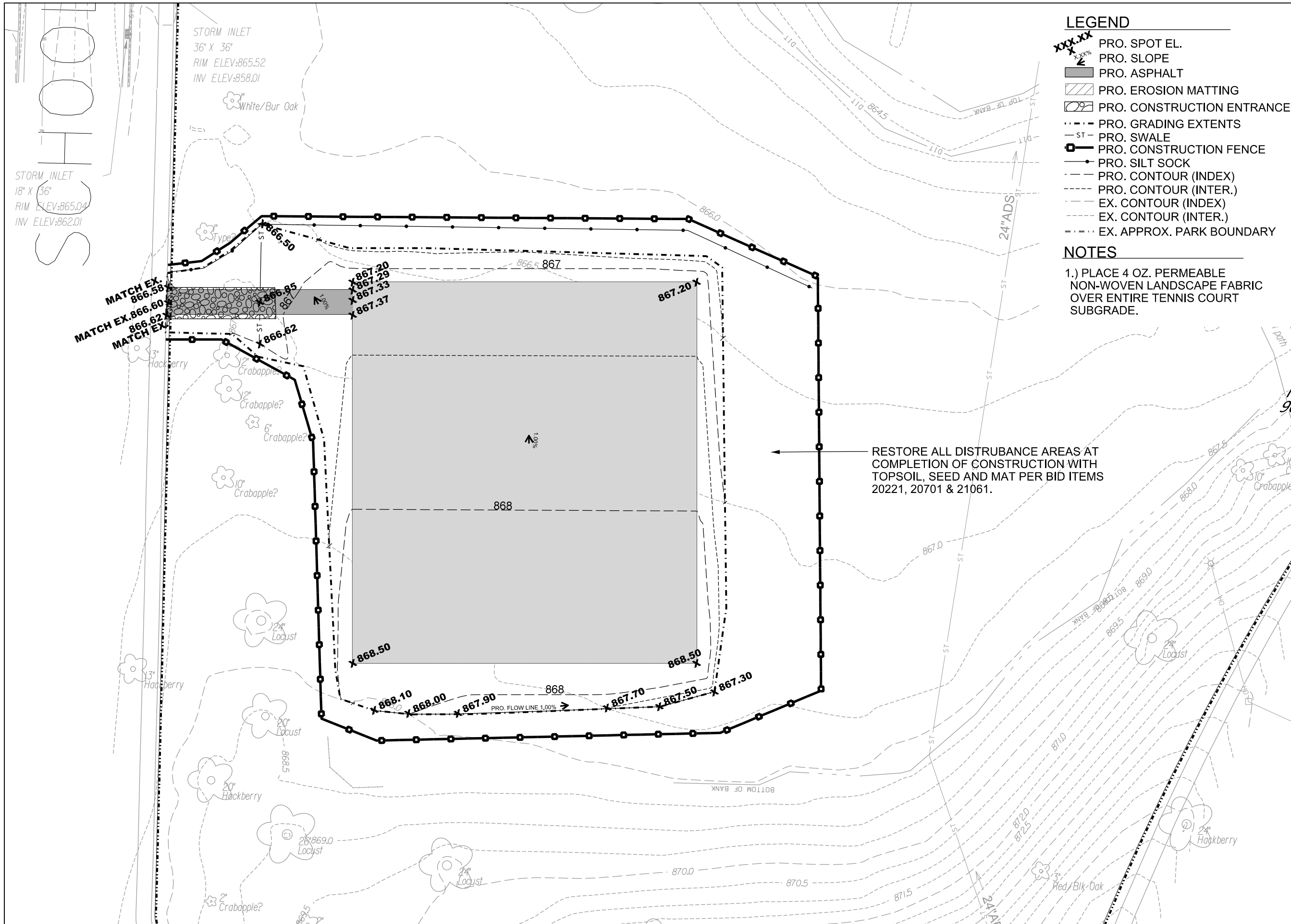
Although every effort has been made in preparing these plans and checking them for accuracy, the contractor and subcontractors must check all details and dimensions of their trade and be responsible for the same.

ITEM	DATE
Advised by: KK	07/11/2019

PUBLIC WORKS PROJECT #:
8423

SHEET TITLE:
SITE PLAN

SHEET NUMBER:
1.3



LEGEND

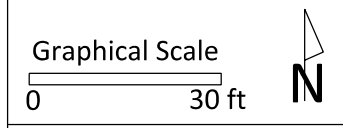
- PRO. SPOT EL.
- PRO. SLOPE
- PRO. ASPHALT
- PRO. EROSION MATTING
- PRO. CONSTRUCTION ENTRANCE
- PRO. GRADING EXTENTS
- PRO. SWALE
- PRO. CONSTRUCTION FENCE
- PRO. SILT SOCK
- PRO. CONTOUR (INDEX)
- PRO. CONTOUR (INTER.)
- EX. CONTOUR (INDEX)
- EX. CONTOUR (INTER.)
- EX. APPROX. PARK BOUNDARY

NOTES

- 1.) PLACE 4 OZ. PERMEABLE NON-WOVEN LANDSCAPE FABRIC OVER ENTIRE TENNIS COURT SUBGRADE.

City of Madison
 Department of Public Works
PARKS DIVISION
 City-County Building, Suite 104
 210 Martin Luther King, Jr. Blvd.
 Madison, WI 53703

play
**MADISON
 PARKS**



PROJECT:
**2019
 NORTHLAND
 MANOR TENNIS
 COURTS**

**NORTHLAND MANOR PARK,
 902 NORTHLAND MANOR DR
 MADISON, WI 53704**

RESTORE ALL DISTURBANCE AREAS AT
 COMPLETION OF CONSTRUCTION WITH
 TOPSOIL, SEED AND MAT PER BID ITEMS
 20221, 20701 & 21061.

Although every effort has been made in preparing these plans and checking them for accuracy, the contractor and subcontractors must check all details and dimensions of their trade and be responsible for the same.

ITEM	DATE
Advised by: KK	07/11/2019

PUBLIC WORKS PROJECT #:
8423

SHEET TITLE:
**GRADING AND
 EROSION CONTROL
 PLAN**

SHEET NUMBER:
1.4



PROJECT:
 2019
 NORTHLAND
 MANOR PARK
 TENNIS COURTS

NORTHLAND MANOR PARK,
 902 NORTHLAND MANOR DR
 MADISON, WI 53704

Although every effort has been made in preparing these plans and checking them for accuracy, the contractor and subcontractors must check all details and dimensions of their trade and be responsible for the same.

ITEM DATE
 Advertised by: KK 07/11/2019

PUBLIC WORKS PROJECT #:
8423

SHEET TITLE:
**DESIGN
 CALCULATIONS**

SHEET NUMBER:
1.5

Northland Manor Park Tennis Courts Calculations											
City of Madison, WI Parks Division											
Date Revised:										6/26/2019	
Derived from more detailed spreadsheet available from Parks Division											
Northland Manor Park Tennis Courts Computation Summary											
Positive volumes are cuts (material available), negative volumes are fills (material needed)											
Row Labels	Sum of Factored (Uncom-pacted) Volume (cu yd)										
Asphalt Place	-133.1										
Gravel (for Pavement) Place	-270.6										
Subsoil Excavate	221.2										
Subsoil Place	-52.5										
Topsoil Excavate	386.7										
Topsoil Place	-120.6										
Clearstone (for Pavement) Place	-514.4										
Grand Total	-483.2										

Reorganized into bid table items			
Bid Item	Quantity	Units	Relation to Table Above
20101 Excavation Cut	608	CY	= Subsoil Excavate + Topsoil Excavate and 6 CY allowance for concrete footings
20217 Clear Stone	1080	tons	= (Clear Stone Place) * - 2.1 ton/cubic yard
20202 Fill Borrow	169	CY	= difference of Subsoil Place & Subsoil Excavate
20221 Topsoil	722	SY	= (Topsoil Place)/-.167
40102 Crushed Aggregate Base Course Gradation No. 2	541	tons	= (Gravel Place) * -2 ton/cubic yard
40202 HMA Pavement 3 LT 58-28S	287	tons	= Asphalt Place * -2.16 ton/cubic yard

Northland Manor Park Tennis Courts Calculations											
City of Madison, WI Parks Div											
Date Revised:										6/26/2019	
Notes: Positive volumes are cuts, negative volumes are fills. Not all parts of all surface models (Digital Terrain Models) are used for computations or intended for actual construction.											
Existing NorthlandManor_Survey2019-11-24.dtm											
Proposed Pro2.dtm											
Sort	Grp	Material	Item	From Surface Model	To Surface Model	area (sq ft)	depth (ft)	Unfac-tored volume (cu ft)	Unfac-tored volume (cu yd)	Expan-sion Factor (%)	Factored (Uncom-pacted) Volume (cu yd)
1.1	Grass to Court Asphalt	Topsoil Excavate	Strip 6in topsoil	n/a	n/a	13888	0.50	6944	257.2	0%	257.2
1.2	Grass to Court Asphalt	Subsoil Excavate	Cut subsoil to proposed subgrade	Ex-6in	Pro-21in	13888	varies	5763	213.5	0%	213.5
1.3	Grass to Court Asphalt	Subsoil Place	Fill subsoil to proposed subgrade	Ex-6in	Pro-21in	13888	varies	-6	-0.2	0%	-0.2
1.4	Grass to Court Asphalt	Gravel (for Pavement) Place	Place 6in gravel base	n/a	n/a	13888	-0.50	-6944	-257.2	0%	-257.2
1.4	Grass to Court Asphalt	Clearstone (for Pavement) Place	Place 12in clear stone	n/a	n/a	13888	-1.00	-13888	-514.4	0%	-514.4
1.5	Grass to Court Asphalt	Asphalt Place	Place 3in asphalt	n/a	n/a	13888	-0.25	-3472	-128.6	0%	-128.6
2.1	Grass to Path Asphalt	Topsoil Excavate	Strip 6in topsoil	n/a	n/a	483	0.50	242	8.9	0%	8.9
2.2	Grass to Path Asphalt	Subsoil Excavate	Cut subsoil to proposed subgrade	Ex-6in	Pro-12in	483	varies	197	7.3	0%	7.3
2.3	Grass to Path Asphalt	Subsoil Place	Fill subsoil to proposed subgrade	Ex-6in	Pro-12in	483	varies	-4	-0.2	0%	-0.2
2.4	Grass to Path Asphalt	Gravel (for Pavement) Place	Place 9in gravel base	n/a	n/a	483	-0.75	-362	-13.4	0%	-13.4
2.5	Grass to Path Asphalt	Asphalt Place	Place 3in asphalt	n/a	n/a	483	-0.25	-121	-4.5	0%	-4.5
3.1	Grass to Grass	Topsoil Excavate	Strip 6in topsoil	n/a	n/a	11573	0.50	5787	214.3	0%	214.3
3.2	Grass to Grass	Subsoil Excavate	Cut subsoil to proposed subgrade	Ex-6in	Pro-6in	11573	varies	12	0.4	0%	0.4
3.3	Grass to Grass	Subsoil Place	Fill subsoil to proposed subgrade	Ex-6in	Pro-6in	11573	varies	-1407	-52.1	0%	-52.1
3.4	Grass to Grass	Topsoil Place	Place 6in topsoil	n/a	n/a	11573	-0.50	-5787	-214.3	0%	-214.3

City of Madison
 Department of Public Works
PARKS DIVISION

City-County Building, Suite 104
 210 Martin Luther King, Jr. Blvd.
 Madison, WI 53703

play
**MADISON
 PARKS**

PROJECT:
*2019
 NORTHLAND
 MANOR PARK
 TENNIS COURTS*

*NORTHLAND MANOR PARK,
 902 NORTHLAND MANOR DR
 MADISON, WI 53704*

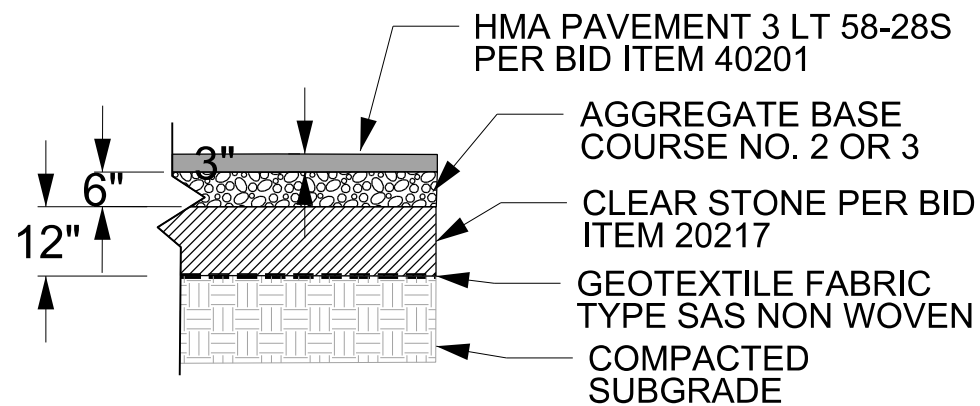
Although every effort has been made in preparing these plans and checking them for accuracy, the contractor and subcontractors must check all details and dimensions of their trade and be responsible for the same.

ITEM	DATE
Advertised by: KK	07/11/2019

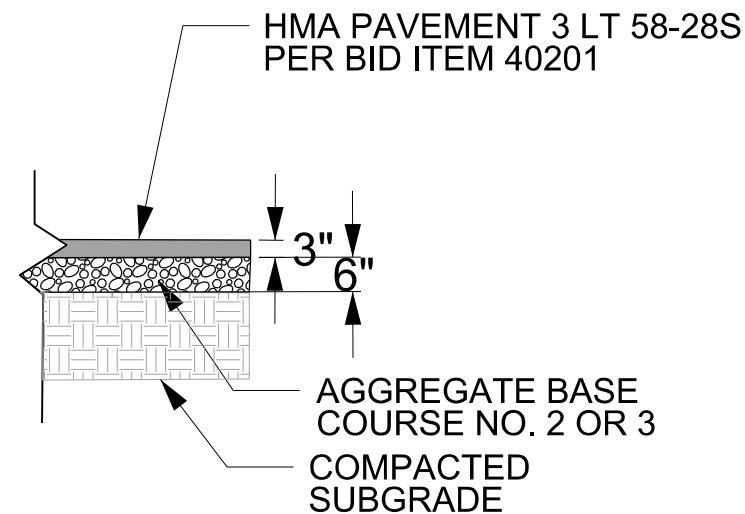
PUBLIC WORKS PROJECT #:
8423

SHEET TITLE:
**ASPHALT PAVEMENT
 DETAILS**

SHEET NUMBER:
1.6



1 ASPHALT COURT
 NTS

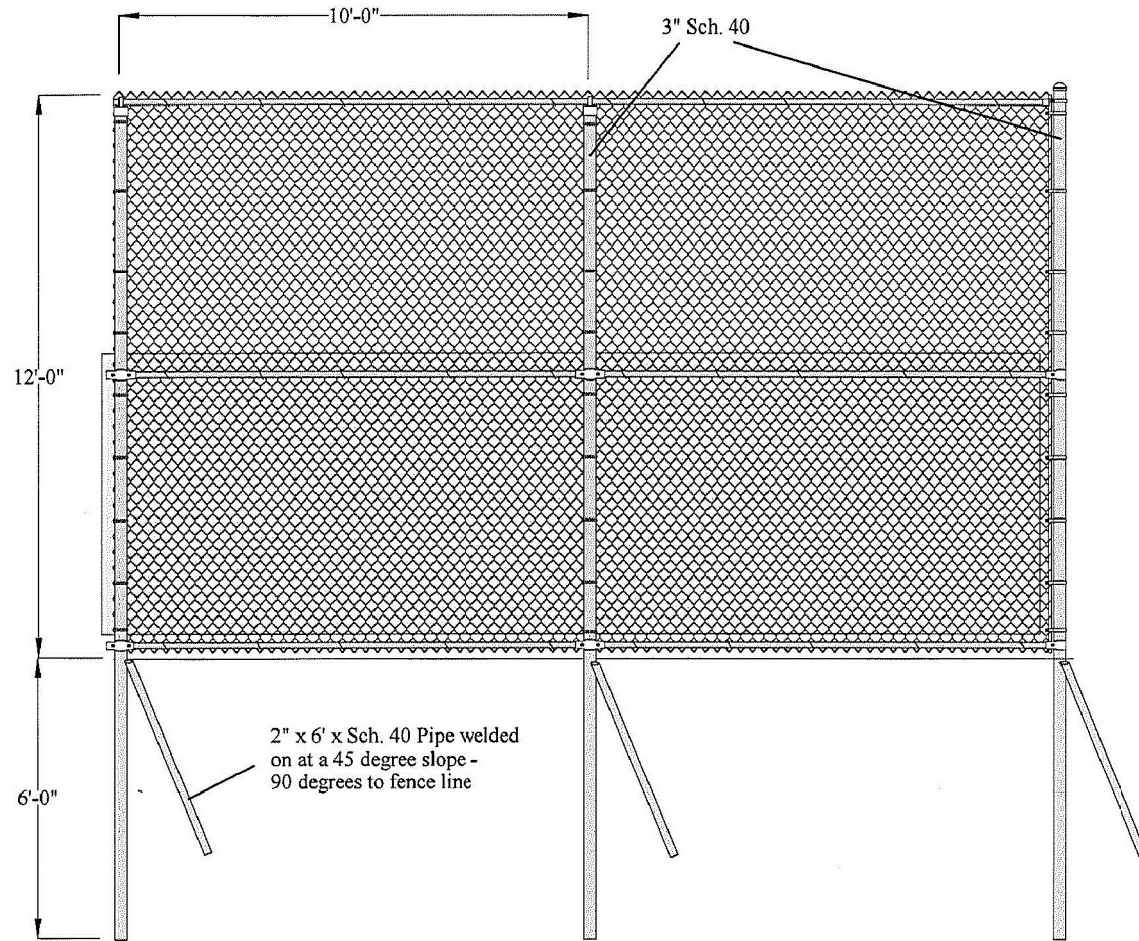


2 ASPHALT PATH
 NTS

NOTES

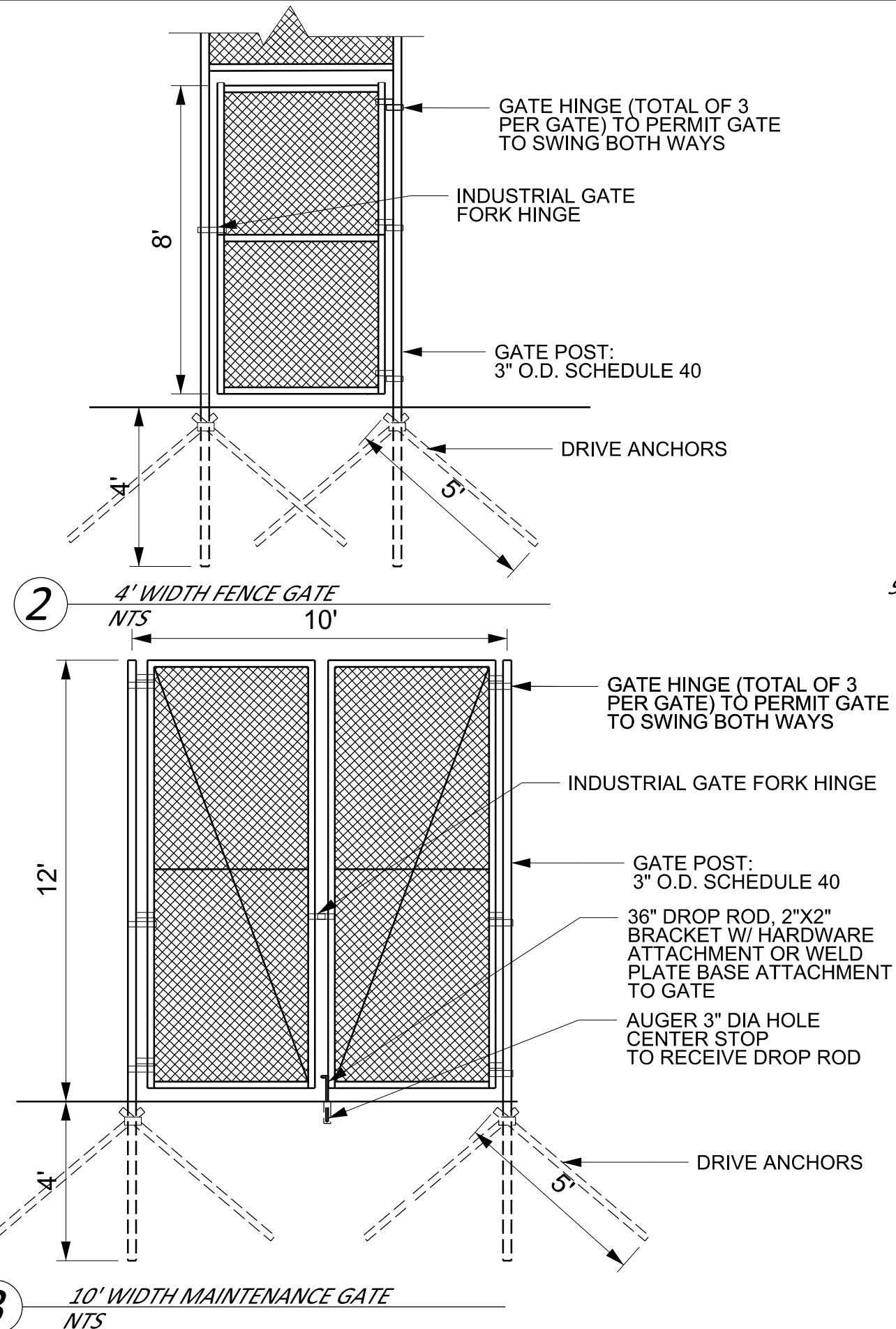
1.) FABRIC, FRAME WORK AND FITTINGS FOR CHAIN LINK FENCE PER DETAILS SHOWN ON THIS SHEET AND IN SPECIFICATION SECTIONS 90002 -90004

2.) END / CORNER POSTS SHALL BE 3" O.D. SCHEDULE 40 WATER PIPE, GALVANIZED; LINE POSTS SHALL BE 3" O.D. SCHEDULE 40 WATER PIPE; RAILS SHALL BE 1 5/8" O.D. SCHEDULE 40 WATER PIPE, GALVANIZED; DRIVE ANCHORS SHALL BE 2" GALVANIZED SCHEDULE 40 PIPE; FABRIC SHALL BE 1 3/4", 11-GAUGE MESH, ALUMINIZED.



FABRIC	Height		Mesh		Gage Selvage		Finish		TYPE
	12'		1 3/4"	11	KK	ALUM			
FRAMEWORK:		O.D.	WALL	WT PER FT	LENGTH	Schedule 40			
END/CORNER POST:	3"	.203		5.79	18'	Schedule 40			
LINE POST:	3"	.203		5.79	18'	Schedule 40			
RAILS:		1 5/8"	.140	2.27	10' TYP.	Schedule 40			

1 12' CHAIN LINK FENCE
NTS



3 10' WIDTH MAINTENANCE GATE
NTS

City of Madison
Department of Public Works
PARKS DIVISION

City-County Building, Suite 104
210 Martin Luther King, Jr. Blvd.
Madison, WI 53703

play
**MADISON
PARKS**

PROJECT:
*2019
NORTHLAND
MANOR TENNIS
COURTS*

*NORTHLAND MANOR PARK,
902 NORTHLAND MANOR DR
MADISON, WI 53704*

Although every effort has been made in preparing these plans and checking them for accuracy, the contractor and subcontractors must check all details and dimensions of their trade and be responsible for the same.

ITEM DATE
Advised by: KK 07/11/2019

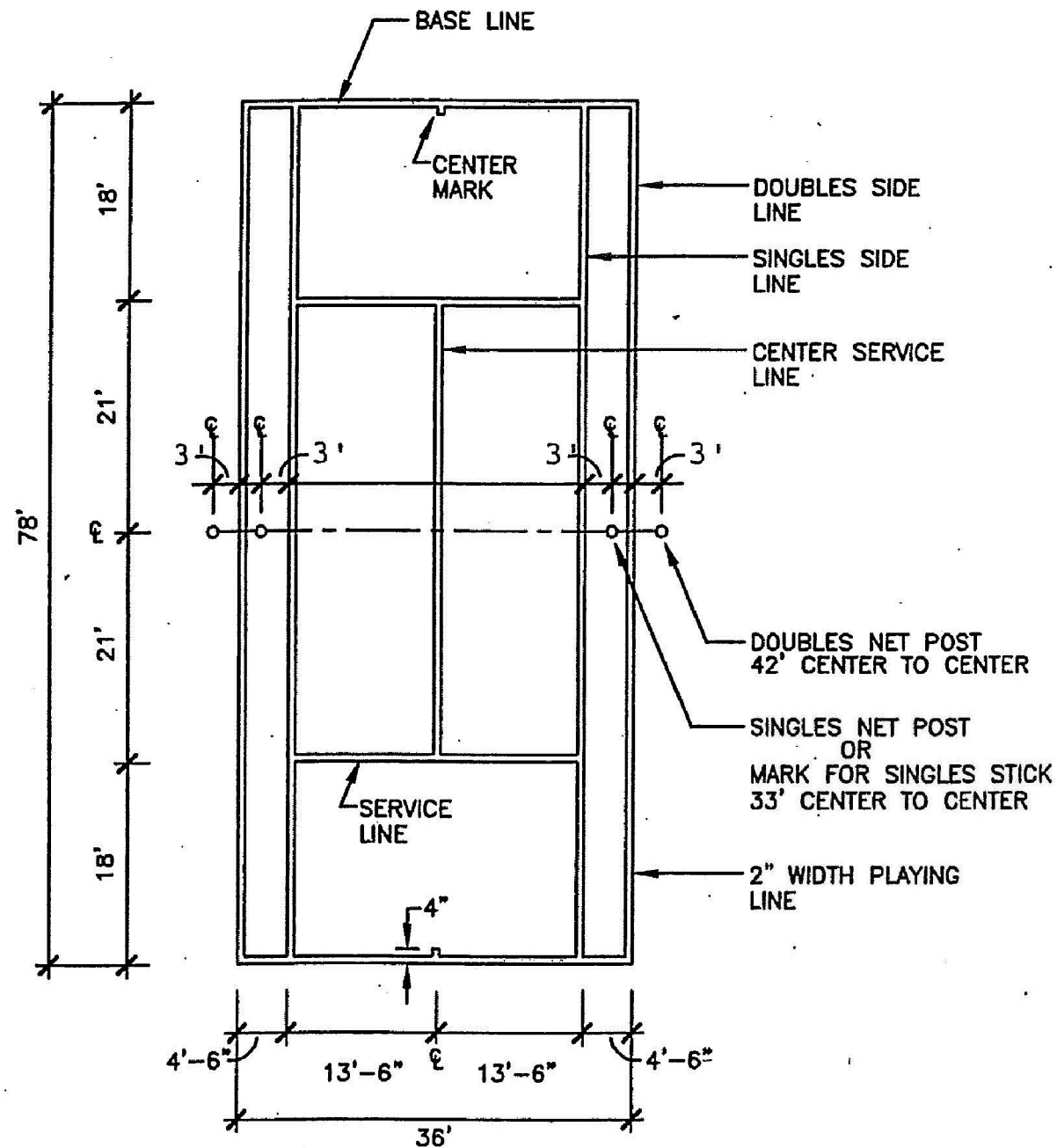
PUBLIC WORKS PROJECT #:
8423

SHEET TITLE:
**FENCING AND
GATE DETAILS**

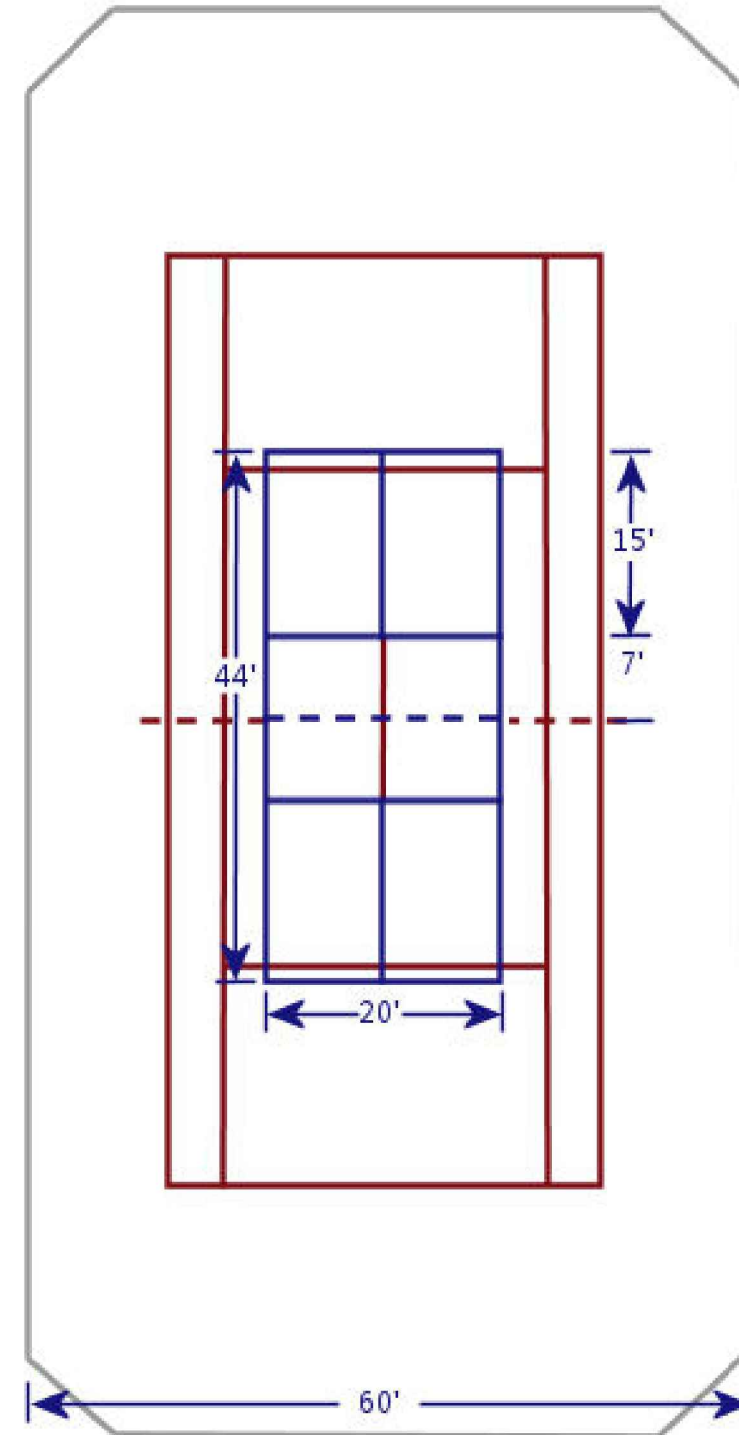
SHEET NUMBER:
1.7

NOTES

- 1.) STRIPING DIMENSIONS PER U.S. TENNIS COURT AND TRACK BUILDERS ASSOCIATION & USTA AND USAPA - SEE BID ITEMS 90009& 90010 FOR MORE INFORMATION
- 2.) COURT DIMENSIONS SHOWN ARE INCLUSIVE OF LINES
- 3.) WIDTH FOR ALL LINES IS TWO INCHES (2"), EXCEPT THE BASE LINE WHICH MAY BE BETWEEN 2" AND 4" IN WIDTH
- 4.) CENTER MARK FOR TENNIS SHALL EXTEND 2" BEYOND INSIDE EDGE OF BASE LINE



1 TENNIS COURT STRIPING LAYOUT
NTS



2 DUAL TENNIS-PICKLEBALL COURT STRIPING LAYOUT
NTS

City of Madison
Department of Public Works
PARKS DIVISION

City-County Building, Suite 104
210 Martin Luther King, Jr. Blvd.
Madison, WI 53703

play
**MADISON
PARKS**

PROJECT:
*2019
NORTHLAND
MANOR TENNIS
COURTS*

*NORTHLAND MANOR PARK,
902 NORTHLAND MANOR DR
MADISON, WI 53704*

Although every effort has been made in preparing these plans and checking them for accuracy, the contractor and subcontractors must check all details and dimensions of their trade and be responsible for the same.

ITEM	DATE
Advised by: KK	07/11/2019

PUBLIC WORKS PROJECT #:
8423

SHEET TITLE:
**COURT STRIPING
DETAILS**

SHEET NUMBER:
1.8

City of Madison
Department of Public Works
PARKS DIVISION

City-County Building, Suite 104
210 Martin Luther King, Jr. Blvd.
Madison, WI 53703

play
**MADISON
PARKS**

PROJECT:
*2019
NORTHLAND
MANOR TENNIS
COURTS*

*NORTHLAND MANOR PARK,
902 NORTHLAND MANOR DR
MADISON, WI 53704*

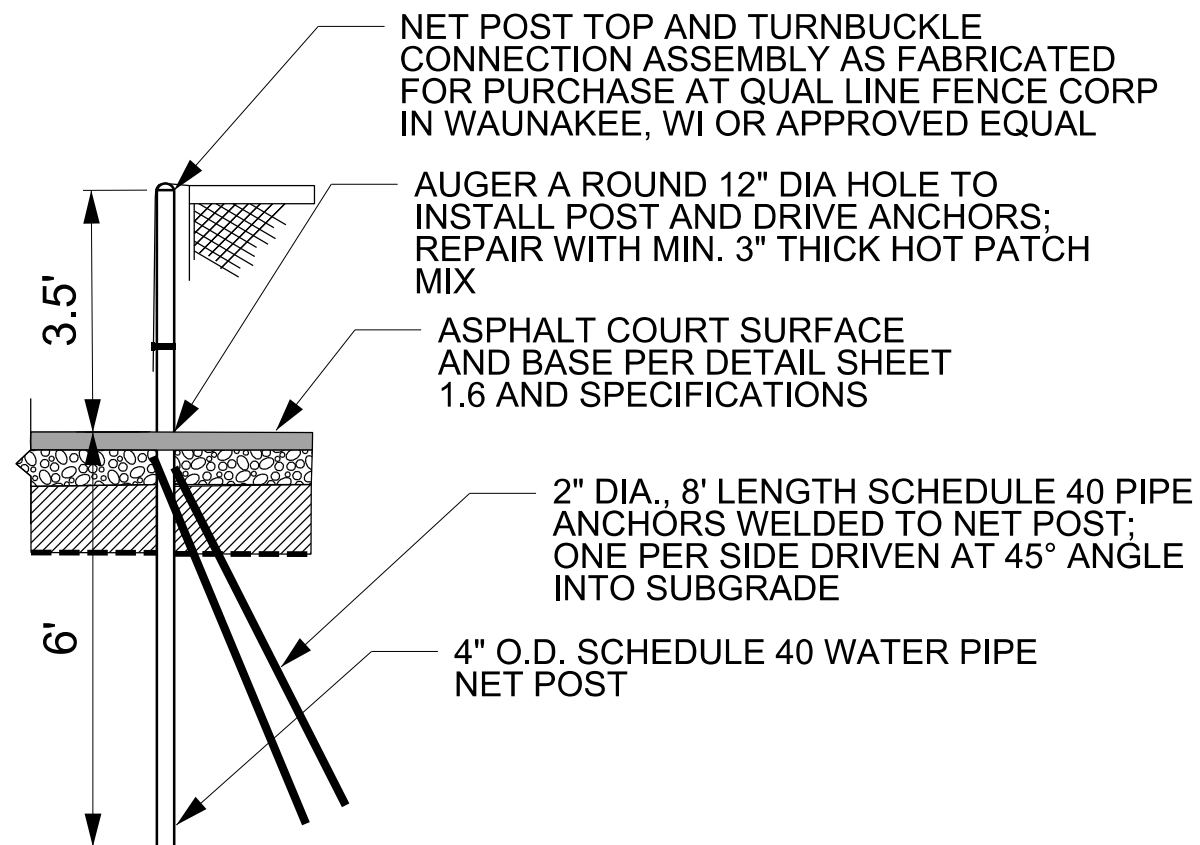
Although every effort has been made in preparing these plans and checking them for accuracy, the contractor and subcontractors must check all details and dimensions of their trade and be responsible for the same.

ITEM	DATE
Advised by: KK	07/11/2019

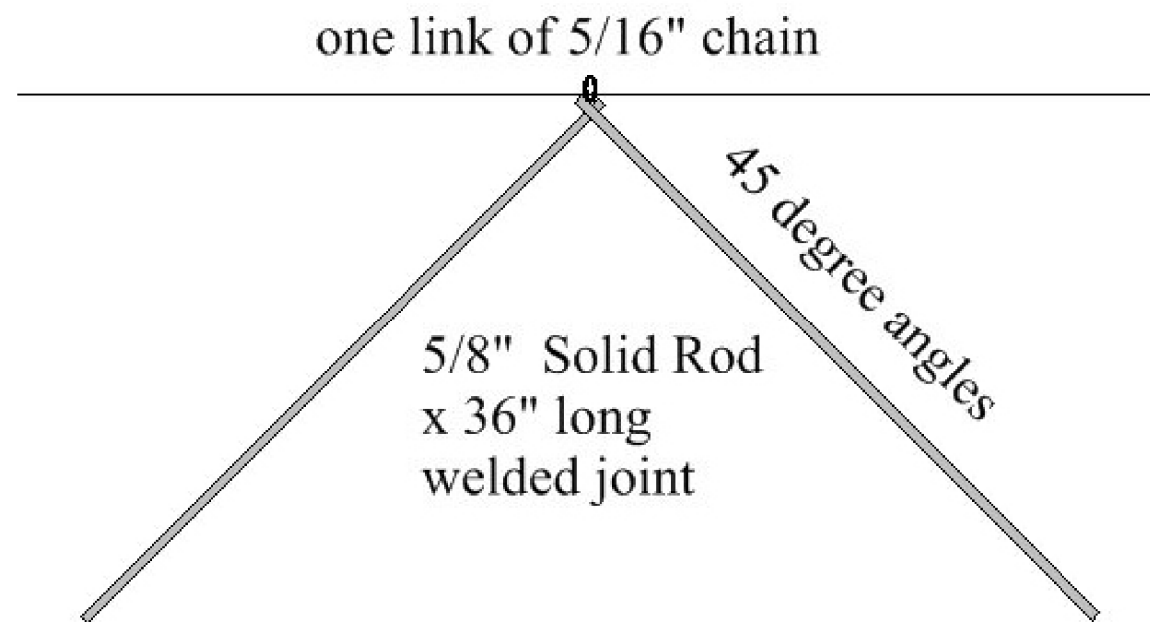
PUBLIC WORKS PROJECT #:
8423

SHEET TITLE:
**NET POST AND
NET TIE-DOWN
DETAILS**

SHEET NUMBER:
1.9



1 NET POST
NTS



2 CENTER NET TIE-DOWN
NTS